

# Welcome to the Australian Trades College Western Australia

*Formerly Australian Technical College –Perth South*



**Trevor Williams**  
**Chief Executive Officer**

**11 August 2010**

***Safety – Engagement - Success***



Australian Trades College  
Western Australia



# Partnering with industry through school-based apprenticeships.

A unique pathway for the transition from school to work.

*Safety – Engagement - Success*



Australian Trades College  
Western Australia

# Australian Trades College WA

## What is the Australian Trades College WA?

- ❖ **A School** - registered independent senior secondary College - Year 11 and 12 only
- ❖ **A Training Company** - Registered Training Organisation (RTO)
- ❖ **An Employer of Apprentices** - registered Group Training company
- ❖ Commenced operating in 2007 as the Australian Technical College – Perth South
- ❖ Offers a unique educational model, focussed on the **transition from school to work** via an Australian School-based Apprenticeship (ASbA)



Australian Trades College  
Western Australia

# Where is the ATC WA located?

- ❖ **Maddington** – Canning Park Avenue (300m from Maddington Train Station)



- ❖ **Armadale** – 41 – 45 Commerce Avenue (100m from Armadale Train Station)



*Safety – Engagement - Success*



Australian Trades College  
Western Australia

# Australian Trades College WA

## What is an ASbA?

- ❖ An ASbA is a combination of *academic, vocational and technical education* and *paid employment* where a student's school studies, training and work are integrated in the College curriculum.
- ❖ Young people can achieve their *Western Australian Certificate of Education (WACE)* and *commence an apprenticeship* (on a part-time basis) in their trade of choice.



# Australian Trades College WA

## Program Structure – 2 Year Program

Year 11 students enroll in WACE subjects and a Certificate II Pre-Apprenticeship learning essential trade skills, employability skills and studying their WACE subjects



**During first semester students will complete one or two x 2-week blocks of unpaid work experience to get a feel for the workplace and for employers to gauge readiness for an ASbA**



Upon completion of work experience the student will work with ATC Group Training and College Employment Coordinator to secure an ASbA.



**Once a student-apprentice is indentured with an employer (ATC Group Training or a Direct Indenture) they will commence a 5 week at work - 5 week at College rotation until they graduate from Year 12**



When the student-apprentice graduates from the ATC WA they will have obtained their Western Australian Certificate of Education (Year 12 Graduation) and completed up to one year of their chosen trade apprenticeship



Australian Trades College  
Western Australia

# Australian Trades College WA

## Australian Trades College WA – Workplace/College Rotation

<b>2010</b>	<b>Semester 1</b>					<b>Mid Year Break</b>	<b>Semester 2</b>				
Year 11 Group A	<b>Cert II Pre-App</b>						Orange	Light Blue	Orange	Light Blue	Orange
Year 11 Group B							Light Blue	Orange	Light Blue	Orange	Orange
<b>2011</b>	<b>Semester 1</b>						<b>Semester 2</b>				
Year 12 Group A	Orange	Light Blue	Orange	Light Blue	Orange	Light Blue	Orange	Light Blue	Orange	<b>Year 12 Graduation</b>	
Year 12 Group B	Light Blue	Orange	Light Blue	Orange	Light Blue	Orange	Light Blue	Orange			

	5 Week Blocks	Work Placement – On Job Training and Assessment
	5 Week Blocks	In College - WACE and Off Job Training and Assessment



Australian Trades College  
Western Australia

# Australian Trades College WA

## Benefits of becoming a School-based Apprentice

- ❖ ATC WA focuses on workplace and project-based learning which builds student confidence, self esteem and personal satisfaction.
- ❖ Industry led and industry driven – representation on the Board, frequent feedback from employers
- ❖ Small work teams (optimum 15, max 20 student-apprentices)
- ❖ Over the course of the two-year program students have the opportunity to complete in excess of **800 hours of trade training in a state of the art College workshop** and up to **1300 hours of industry training with an employer**
- ❖ The student-apprentice earns an income when on indentured workplace rotation (*can earn up to approx \$10 000 - \$12 000 over two years*). *On graduation from the College many will become 2<sup>nd</sup> Year apprentices on 2<sup>nd</sup> year apprentice wages*
- ❖ Year 12 graduation keeps the door open for future study
- ❖ College has a full-time **Student Counsellor** at each campus to mentor and support student apprentices
- ❖ College has its own employment arm, ATC Group Training, to assist student-apprentice to find employment



# Australian Trades College WA

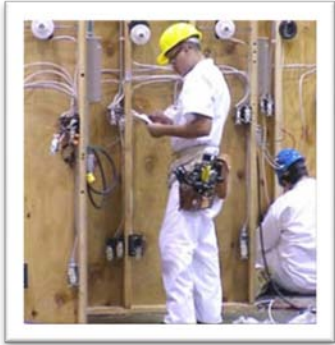
## Employment Statistics

- ❖ 2008 Year 12 ATC WA Graduates into Full time Apprenticeships – **96%**
- ❖ 2008 Year 11's in School-based Apprenticeships – **77%**
- ❖ 2009 Year 12's in School-based Apprenticeships – **77%**
- ❖ 2009 Years 12's with ASbA transitioned into Full Time Apprenticeship – **100%**
- ❖ 2009 Year 11's in School-based Apprenticeships – **30%** (tight labour market)
- ❖ 2010 Year 12's in School-based Apprenticeships – **78%**  
*(seeing a stronger uptake already in 2010 e.g. Engineering Fabrication – 99%,*
- ❖ 2010 60 students employed by ATC GTO



# Australian Trades College WA

## Trades offered at ATC WA:



### Maddington Campus

Automotive Mechanic  
Engineering Fabrication (Heavy)



### Armadale Campus

Cabinet Making  
Carpentry and Joinery  
Electrical  
Bricklaying



Australian Trades College  
Western Australia

*Safety – Engagement - Success*

# Australian Trades College WA

## WACE Subjects

- ❖ English 1A/1B, 1C/1D
- ❖ Maths 1B/1C, 1D/1E, 2A/2B
- ❖ Business Management and Enterprise 1A/1B, 1C/1D
- ❖ Physics 1B/2B (Mainly for Electricians)
- ❖ Workplace Learning 1A/1B
- ❖ Trade Competencies contribute to completion of WACE program

# Australian Trades College WA

## Cost

- ❖ 2010 fee = **\$1,100** (\$200 enrolment fee, \$600 tuition fee, \$300 resources fee) – *under review for 2011.*
- ❖ Students are required to purchase their uniforms, boots, books and relevant safety equipment.
- ❖ Students should also anticipate purchasing basic tools prior to going to work

## Scholarships

- ❖ There are a number of community and industry scholarships available. Student-apprentices are encouraged to apply for a scholarship after they have been enrolled at the College for 3-months.
- ❖ **In 2009 the College received \$50,000 sponsorship from local industry and community organisations**



Australian Trades College  
Western Australia

# Australian Trades College WA

## Application Process

1. Fill out application form, identifying trade preferences
2. Applicant to sit multiple choice, numeracy, literacy, and aptitude assessments
3. Applicant to sit 20 minute interview with an ATC WA Staff member
4. Letter of offer sent to applicant
5. Acceptance of offer and enrolment confirmed on payment of \$200 enrolment fee

# Other Services

- RTO Auspicing for Schools
- Skills Recognition and RPL
- Fee for Service Courses
  - Senior First Aid
  - Fork Lift
  - Construction White Card
  - Automotive Air-conditioning
  - Wheel alignment
- Venue Hire

*Safety – Engagement - Success*



# Questions

*Safety – Engagement - Success*

